

Garage doors



Jet

Irreversible electromechanical actuator for spring-balanced sectional doors up to 2.6 m in height and counterweight-balanced doors up to 2.8 m in height. Maximum force 650 N

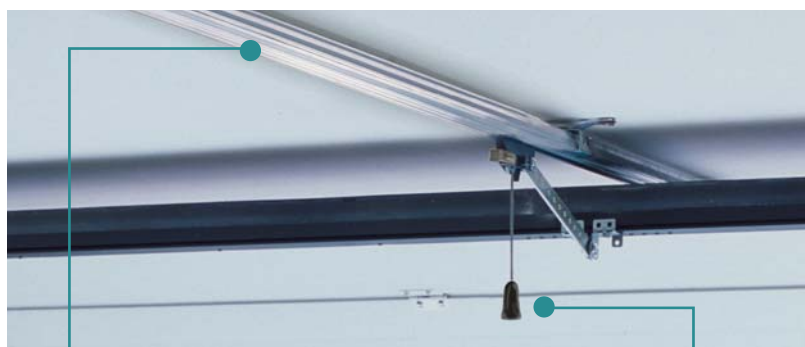
External push-button for operating the motor reducer and changing control unit functions without opening the protective casing



Built-in courtesy light



Practical and functional connection diagram printed on the product label: very simple and clear

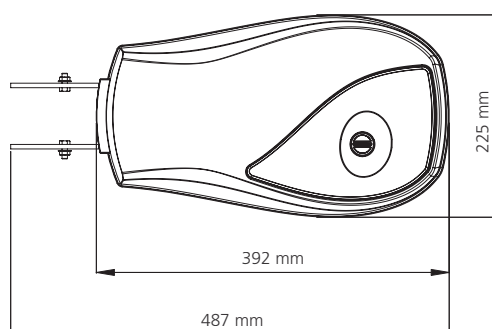
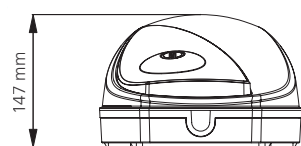


Single length 3 m rails, for maximum ease of assembly

Practical and functional release system

- The special "Push & Pull" chain drive system allows easy and rapid installation
- 230 VAC built-in control unit
- Self-learning programming, memorising the times, braking, and force necessary for both opening and closing
- Built-in 433.92 MHz receiver allowing the use of Phoenix series transmitters
- Magnetic encoder movement control

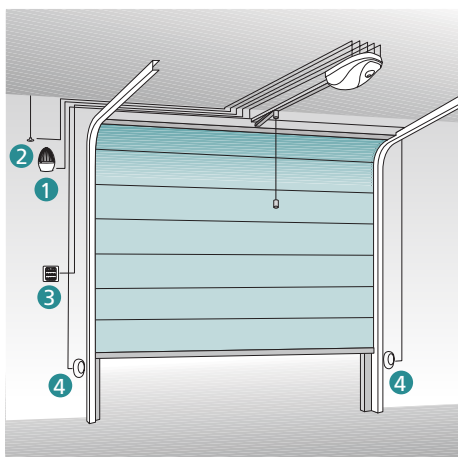
Dimensions



Garage doors

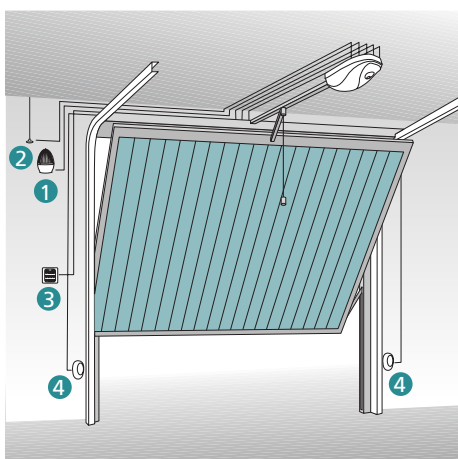


Installation diagrams

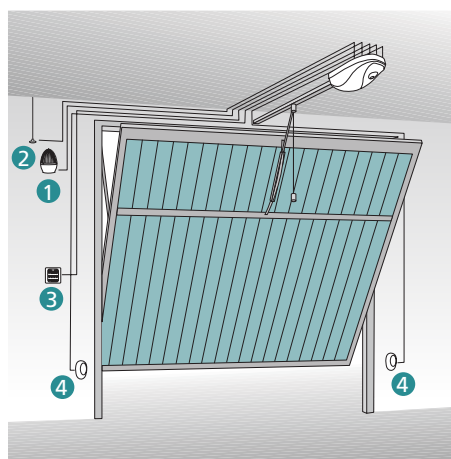


Sectional door

- ① Flashing light (cable 2 x 0,5 mm²)
- ② Tuned antenna (cable RG-58)
- ③ Key switch or digital radio-controlled switch (cable 2 x 1 mm²)
- ④ Pair of photocell detectors (RX : cable 4 x 1 mm²) (TX : cable 2 x 1 mm²)



Counterweight-balanced door



Spring-balanced door

Technical features

Jet models	Jet 650 (25A001)	Jet 650-120V (25A003)
Power supply	230 V - 50 Hz	120 V - 60 Hz
Average speed	12 cm/s	12 cm/s
Line absorption	1 A	2 A
Absorbed power	230 W	240 W
Full load current	8 A	8 A
Max. load of accessories 24V	10 W	10 W
Working temperature	-20 / +50 °C	-20 / +50 °C
Protection	IP 20	IP 20
Working cycle	30 %	30 %
Motor weight	10 Kg	10 Kg
Nominal force	650 N	650 N



Vega

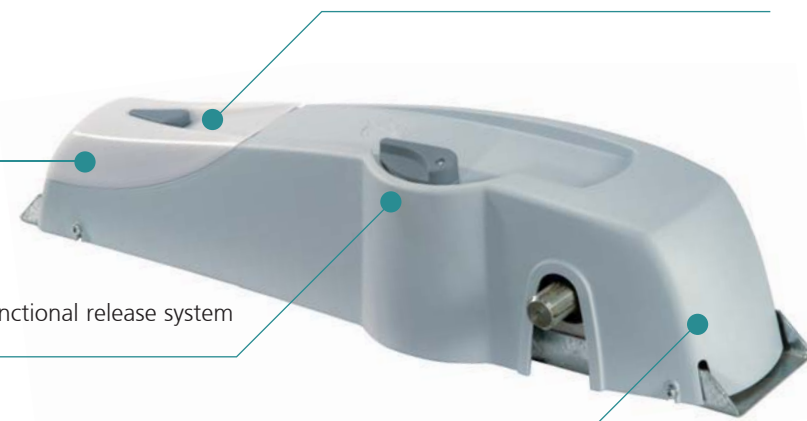
230 V and 24 V electromechanical actuator for balanced doors

External push-button for operating the motor reducer and changing control unit functions without opening the protective casing (on VEGA-24V model)

Built-in courtesy light

Practical and functional release system

Compact form and mechanically strong in order to guarantee optimal performance with all types of balanced doors



- Built-in control unit
- It uses Phoenix series transmitters thanks to the built-in 433.92 MHz receiver in VEGA-24V model and to the MR1 plug-in radio receiver in VEGA-C model

24 V version: ideal for intensive use

- Anti-crush safety, achieved by using amperometric control
- Door slow-down in the limit switch area to prevent noisy closure and rebound
- Self-learning of the closing and opening times

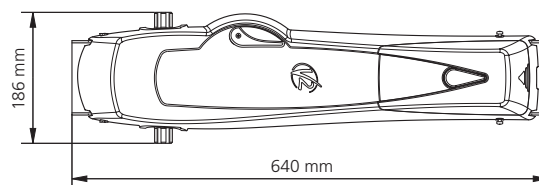
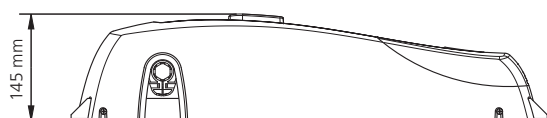
Technical features

Vega models	Vega 24V (24A001)	Vega-C (24A005)
Power supply	230 V - 50 Hz	230 V - 50 Hz
Nominal force	45 W	280 W
Line absorption	1 A	2,5 A
Max. power	230 W	575 W
Full load current	8 A	2,5 A
Light	230 V - 50 Hz 25 W	230 V - 50 Hz 25 W
Working temperature	-20 / +50 °C	-20 / +50 °C
Protection	IP 20	IP 20
Working cycle	50 %	30 %
Motor weight	9 Kg	9 Kg

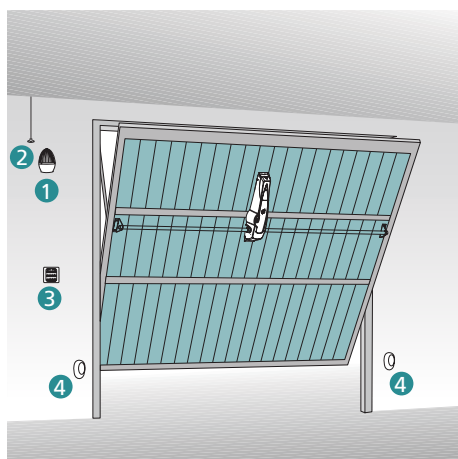
Garage doors



Dimensions



Installation diagram



Balanced door

- ① Flashing light
- ② Tuned antenna
- ③ Key switch or digital radio-controlled switch
- ④ Pair of photocell detectors