



Vega

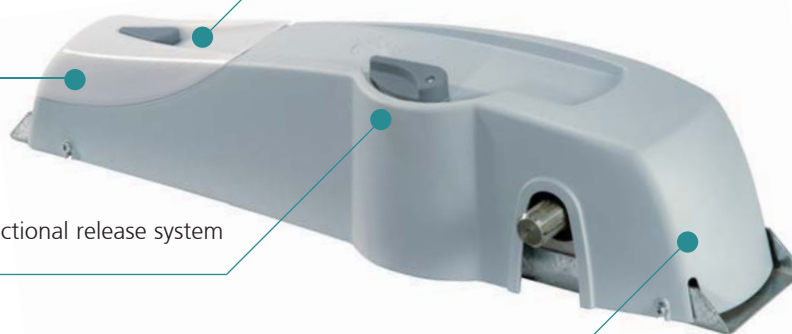
230 V and 24 V electromechanical actuator for balanced doors

External push-button for operating the motor reducer and changing control unit functions without opening the protective casing (on VEGA-24V model)

Built-in courtesy light

Practical and functional release system

Compact form and mechanically strong in order to guarantee optimal performance with all types of balanced doors



- Built-in control unit
- It uses Phoenix series transmitters thanks to the built-in 433.92 MHz receiver in VEGA-24V model and to the MR1 plug-in radio receiver in VEGA-C model

24 V version: ideal for intensive use

- Anti-crush safety, achieved by using amperometric control
- Door slow-down in the limit switch area to prevent noisy closure and rebound
- Self-learning of the closing and opening times

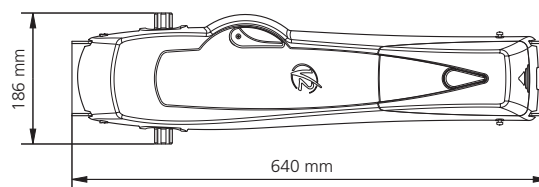
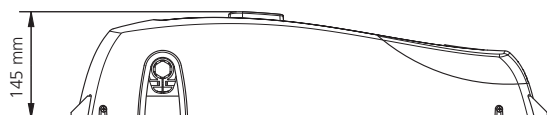
Technical features

Vega models	Vega 24V (24A001)	Vega-C (24A005)
Power supply	230 V - 50 Hz	230 V - 50 Hz
Nominal force	45 W	280 W
Line absorption	1 A	2,5 A
Max. power	230 W	575 W
Full load current	8 A	2,5 A
Light	230 V - 50 Hz 25 W	230 V - 50 Hz 25 W
Working temperature	-20 / +50 °C	-20 / +50 °C
Protection	IP 20	IP 20
Working cycle	50 %	30 %
Motor weight	9 Kg	9 Kg

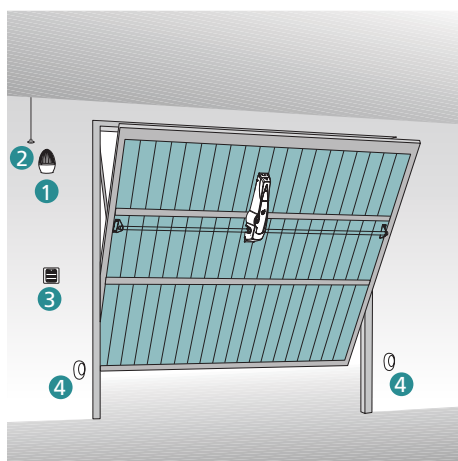
Garage doors



Dimensions



Installation diagram



Balanced door

- 1 Flashing light
- 2 Tuned antenna
- 3 Key switch or digital radio-controlled switch
- 4 Pair of photocell detectors